

baby lock

enspire

Model BLE1EX

4-Thread Serger

Finished another project? Time to enspire!

The easy-to-use enspire includes adjustable manual tensions, allowing for perfect stitches on any type of fabric.

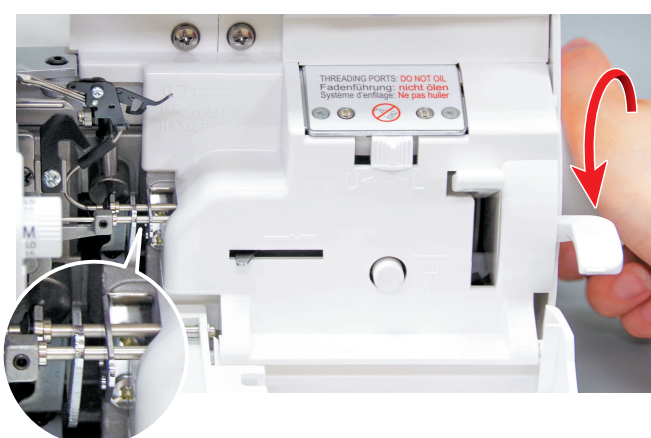
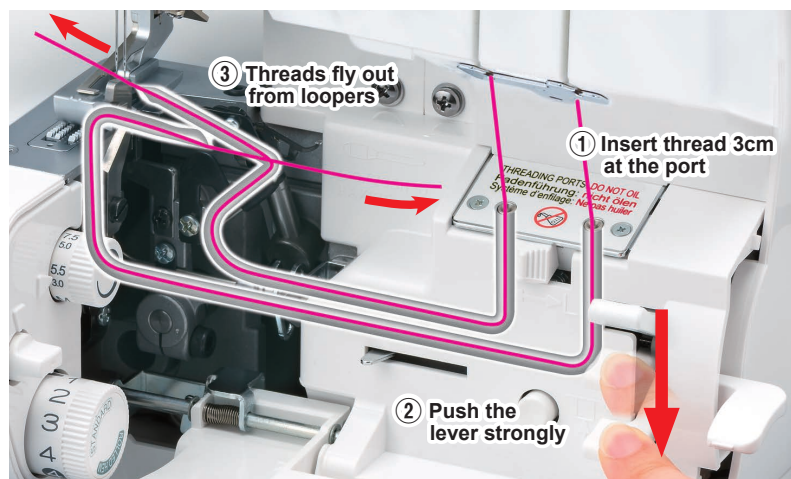
Jet-Air Threading™ threads your machine with the touch of a lever.

Plus, enspire presser foot features a 6mm height that makes serging on thicker fabrics a breeze!



Jet-Air Threading™

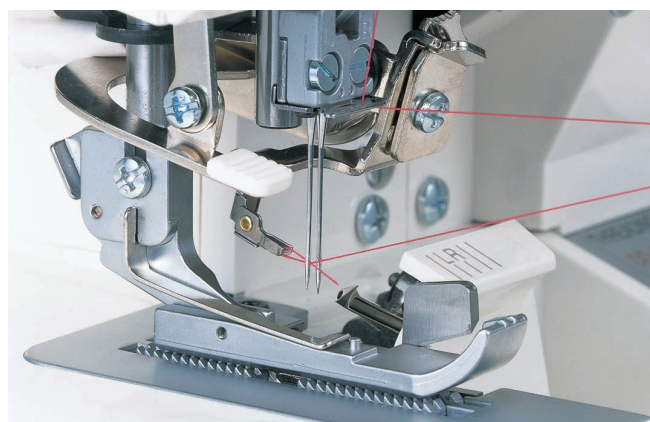
With just the touch of a lever, thread is sent through the tubular loopers. There are no thread guides, no struggling and there's plenty of time to serge away!



Easy Engaging on Looper Threading

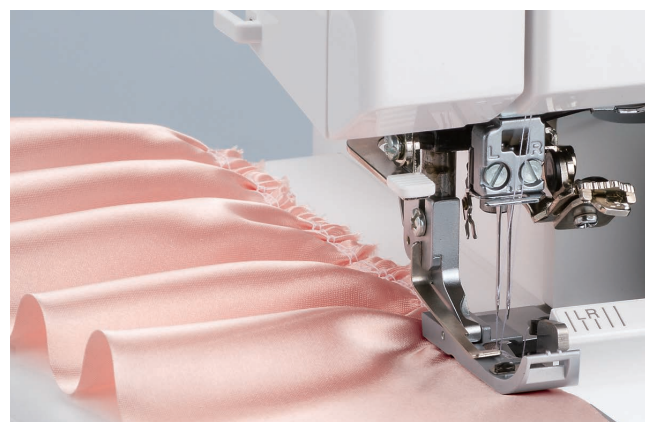
Realized simpler operation of looper threading.

Press the button once and turn Pully to connect the pipes. Now you are ready for Looper threading!



Needle Threading System

Baby Lock has put a lot of thought into threading a serger, but they haven't forgotten about the most important part- the needles. This system locks the needle threader in place for a quick and easy threading at the touch of a lever.



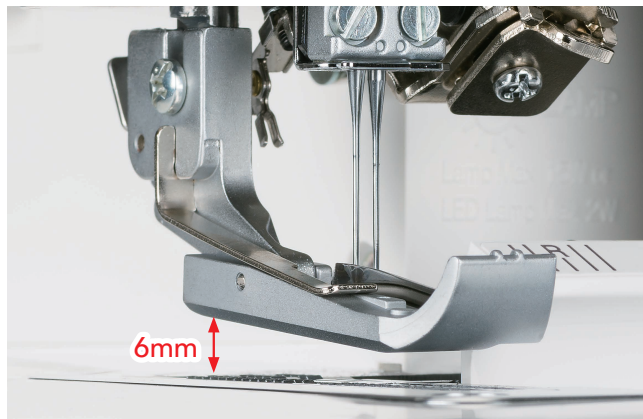
Differential Feed

Baby Lock took the differential feed mechanism to a new level by adding a single unit feed dog mechanism. This ensures stronger feeding as well as more consistent gathering on all fabrics.



Micromatic Twin Cam Tension System

Eliminates thread tangles and delivers proper tension with all threads on any fabric.



Presser Foot Height Up to 6mm

Presser foot height changed to 6.0mm. With this change, it became easier to set thick fabrics.



Dial Adjustable Stitch Length and Automatic Rolled Hem

Stitch length can be easily adjusted on the enspire using one dial. This dial includes an Automatic Rolled Hem setting that will retract the built-in stitch width finger for a rolled hem finish.



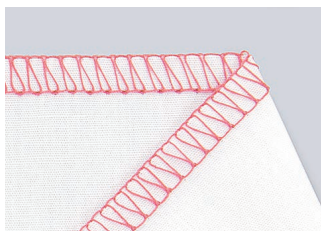
Pure Lighting with 2 LED Lights

Clearly see every stitch, fabric and thread color under two bright LED lights.

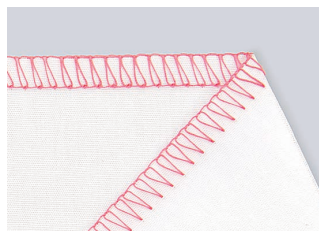
Variety of various seams.



4-thread Overlock



3-thread Overlock



2-thread Overlock



3-thread Narrow



3-thread Rolled Edge

Features and Specifications

Technology Features

- Jet-Air Threading™
- Micromatic Twin Cam Tension System
- Full-Featured Differential Feed
 - 2 to 1 Ratio - gathering
 - 3 to 4 Ratio - stretching
- 4/3/2 Thread serging
- Exclusive Fabric Support System
- Vertical Needle Penetration
- Pure lighting with 2 LED light

Advanced Serging Features

- Rolled hemming with 2 or 3 threads
- Flatlock stitching with 2 or 3 threads
- Dial adjustable stitch width: 1.5 - 7.5mm
- Dial adjustable stitch length: 0.75 - 4mm
- Dial adjustable built-in rolled hem
- Knife and needles closer for easier serging curves
- Heavy-duty cutting system
- Side thread cutter
- 1500 Stitches per minute
- Presser foot pressure adjustment
- Adjustable presser foot height up to 6mm

Convenience Features

- Built-in needle threading system
- Electronic foot control
- Enhanced telescopic antenna with thread guides
- Snap on, multi-purpose presser foot
- Built-in ribbon/tape guide
- Built-in accessory storage
- Carry handle

Other

- Household needle system:
 - HAx1SP
- Weight: 7.5Kgs

Optional Accessories

- Foot Kit
- Six Foot Kit
- Beading Foot
- Blindhem Foot
- Clear Foot
- Cording Foot 3mm
- Cording Foot 5mm
- Elastic Foot
- Flat Sole Foot
- Lace Applicator Foot
- Ruffling Foot
- Teflon Foot